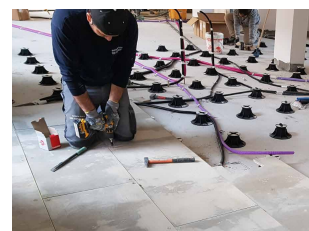
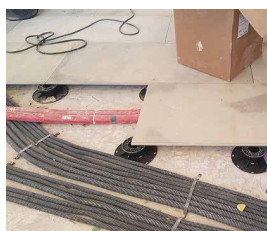
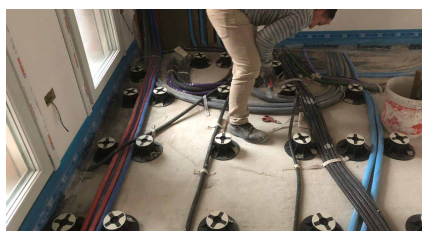
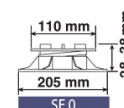
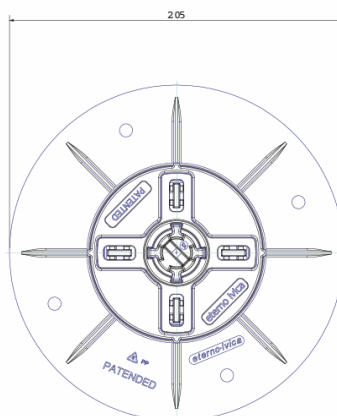


Adjustable support SB SE NM

Self-leveling adjustable supports for elevated floors with bi-material head (pp+rubber)

Installation Instruction



PRODUCT DESCRIPTION

Adjustable supports SB SE NM elevated floor systems is certainly is the best type of contemporary flooring. It is based on a series of modular and adjustable supports that can be easily and safely adapted to any type of floor.

It always guarantee a homogeneous and elegant floor, without making radical changes to the existing structure and avoid the problems of humidity, water infiltration, passage of cables or pipes, always allowing an easy and quick inspection.

STRONG POINTS FOR QUICK, SECURE AND WITHOUT PROBLEMS

The strengths in laying systems with SE SB and NM supports are simply revealed by placing them on top of the waterproofing membrane or any other surface destined to be paved.

After a rough initial adjustment, the laying of the chosen flooring is completed with millimeter precision from the adjustment key even on the finished floor.



The new bi-component head offers an exclusive support in soft anti-noise and anti-slip rubber. The new fins can be removed very easily while the base features innovative pre-cuts for an easy and precise cut.

| FIRST AND UNIQUE SUPPORT TO THE WORLD EQUIPPED WITH HEAD WITH RUBBER FINISH ABLE TO BREAK THE SOUND LEVEL UP TO 25 dB



Self-leveling support allows you to automatically compensate up to 5%



Reinforced adjusting key for a precise adjustment even for finished floors.



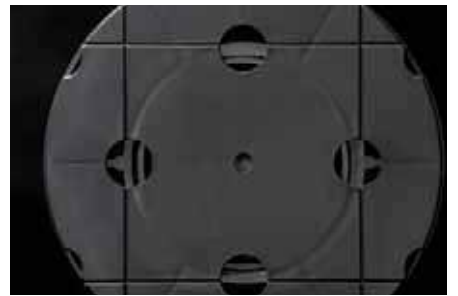
Bi-material PP + rubber head anti-noise and anti-slip.



Pre-cut fins for easy removal. Head-screw attachment: the head always in place.



Security system-Block System between the various components.

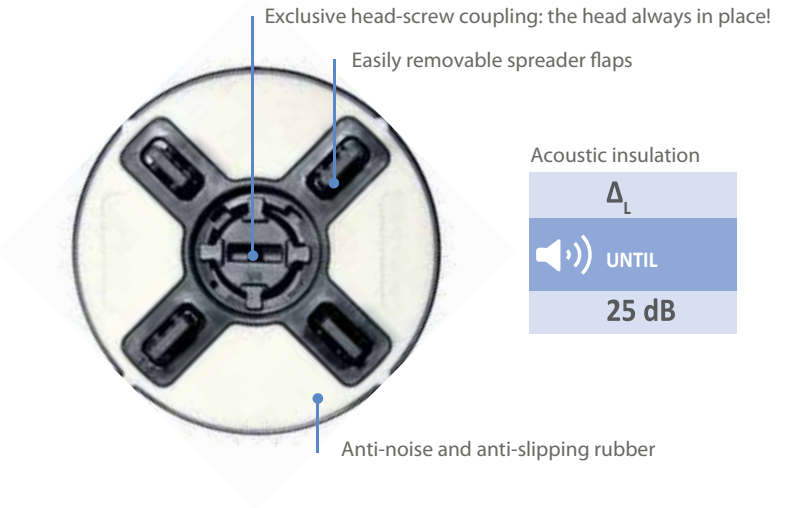


Base plate with pre-cut cut lines.



| ADJUSTMENT

The adjustable supports **SB**, **SE** and **NM** offer multiple solutions to compensate for small imperfections and large slopes of any laying surface so as to always achieve perfectly stable and flat floors. The exclusive adjustment key, an essential element of the system, also allows the adjustment of the supports (and consequently of the floor above) even to the finished floor, thus avoiding having to lift it.



Self-leveling head



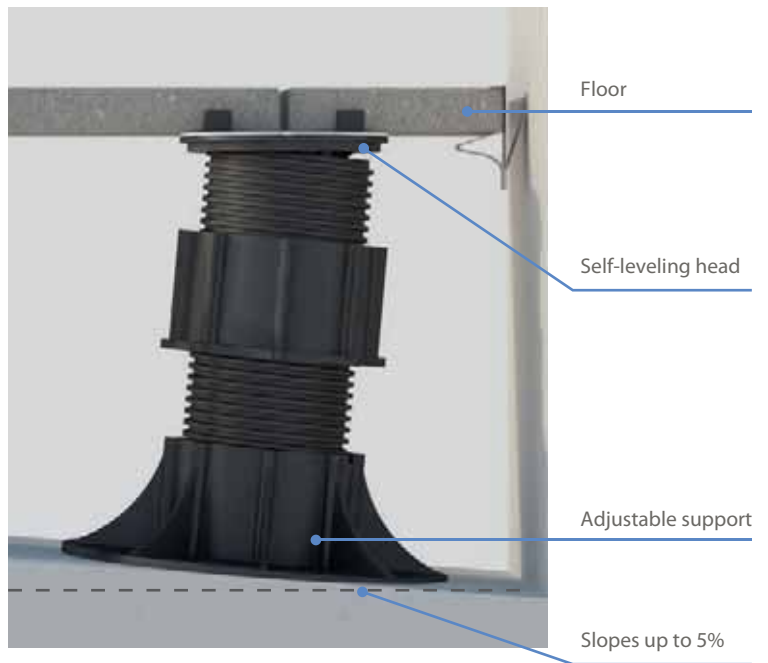
Head



Reinforced adjustment key

| SELF-LEVELING SYSTEM

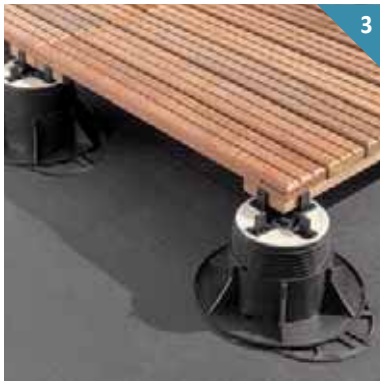
The unique feature of the swiveling head of the **SE** adjustable supports is in the self-leveling that allows to automatically compensate any gradient up to 5% thus greatly reducing the time needed to create a perfectly flat floor.



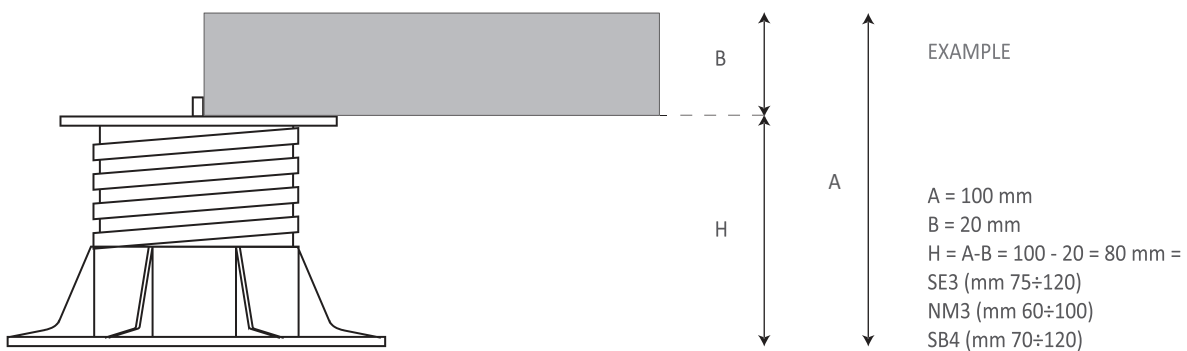
| INSTALLATION WITH LIGHT PANELS

The choice of light panels (wood example) requires the use of an adjustable support with non-tilting head. The use of the self-leveling head is not recommended because the limited weight of the floor does not guarantee perfect stability of the walking surface. The simple and economical solution of fixed supports of the EH range is also always available.

Warning: check with the manufacturer that the tile is load bearing.



CALCULATION OF THE SUPPORT HEIGHT A = finished floor height B = flooring panel height H = support height



| INSTALLATION WITH HEAVY PANELS

The ideal application of the heavy panels is certainly on the exclusive bi-component self-leveling head of the **SE** adjustable support for an automatic compensation of small imperfections and slopes of the laying surface.

Also the adjustable support **SB** and **NM** represent a simple and economical solution, sometimes technically necessary in case of little space, it is also given by the fixed supports of the EH range.

Warning: check with the manufacturer that the tile is self-supporting.



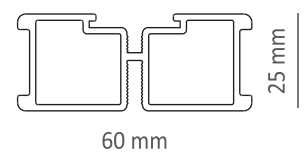
| INSTALLATION OF BEAMS AND LISTONS

The ideal application of plank flooring (decking) is undoubtedly the exclusive self-leveling head of the adjustable support **SE**. The chosen substructure (joist) (wpc, wood, aluminum, vibrocement) is fixed or just resting on the head. Available in various versions. The adjustable support **NM** is also an excellent solution. A simple and economical solution, sometimes technically necessary in case of little space, is also given by the fixed supports of the EH range. In this case, the substructure only supports the spacer fins.



Attention: check the resistance of the chosen joists and planks to calculate the correct interaxis between two supports and between two joists.

Not just plastic supports, but a unique and complete idea of a substructure for your decking. To complete our system, which can be assembled without using screws, we have an exclusive aluminum joist and a steel clip, sliding and rotating to fix the plank. The system can be customized according to your plank.





CUSTOMABLE CLIP
ON REQUEST

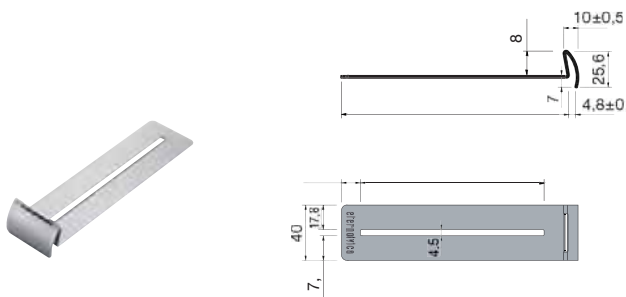


| CLIP PANEL'S EDGE

Designed to avoid contact between the slabs of outdoor raised floors and outside walls, the perimeter spacer is made entirely from stainless steel. It incorporates a damper to absorb longitudinal and transverse thermal expansion and guarantees a secure grip. Use of these clips ensures a stable floor surface with a straight and elegant perimeter.



Code	Type		
P021000220	Edge's clip		



CLIP VERTICAL EDGE

Our clip for vertical closure is designed to solve a problem typical of many external floors, i.e. how to fill in the gap around the edge when no perimeter wall is present.

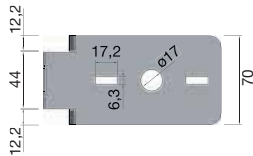
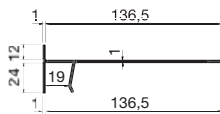
This solution represents an innovative, easy and elegant way to eliminate gaps around raised floors.

The system consists of two special, stainless steel clips for positioning over the head and under the base of the adjustable support.

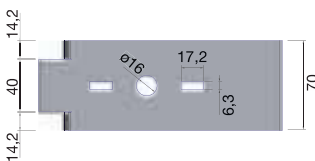
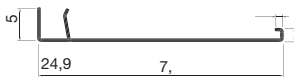
It creates a firm seat capable of gripping the section of floor cut to size to fill the gap. The use of our floor edge clip effectively prevents horizontal movement in floor slabs. Thanks to this system it is also possible to create steps.



Vertical edge head clip



Vertical edge base clip



BETONWOOD Srl

Sede:
Via Falcone e Borsellino, 58
I-50013 Campi Bisenzio (FI)

T: +39 055 8953144
F: +39 055 4640609

info@betonwood.com
www.betonwood.com

SAUTO-ISTPM R.18.9

This document replaces and cancels previous versions. Only complete BetonWood systems must always be applied. Mixed systems, with components from other brands are not allowed. The indications and prescriptions above are based on our current technical-scientific knowledge, which in any case are to be considered purely indicative, as the conditions of use are not controllable by us. Therefore, the buyer must in any case verify the suitability of the product to the specific case, assuming all liability arising from use, relieving BetonWood from any consequent request for damages. For any information contact our technical office.

Beton Wood